

NC900 Series Business Network Computers

Technical Specifications

Standard Features

	N916-WW	N948-WW	N980-WW
System Memory Installed	16MB	48MB	80MB
System Memory Slot Unused	1	0	0
Flash Memory Slot Unused	1	1	1
10/100BaseT	YES	YES	YES
Serial Ports	2	2	2

Available Features

- All bases include auto-sensing 10/100BaseT Ethernet, audio input and output, 3-button mouse with PS2-style mini-DIN connector, two 9-pin RS232 serial ports and a universal external power supply (110V or 220V)

Warranty

- Three-year return-to-depot

Processors

- QED RM5231 @ 165 MHz
- S3 Savage4 graphics controller

Performance

- X11 Xmarks: 12.0
- Wintach: 140 (@1024x768x256 colors)

Color Depth and Maximum Resolution

Color Depth	Max Resolution
8-bit only	1600x1200
16-bit only	1600x1200
24-bit only ¹	1280x1024
16-bit & 8-bit simultaneously ¹	1280x1024
24-bit & 8-bit simultaneously ¹	1024x768

Maximum System Memory

- 256 MB

LAN Ports

- Standard: auto-sensing 10/100BaseT Ethernet
- Field Upgrade: 10Base2 (Thinnet)

Parallel Port

- Field Upgrade: One bi-directional 25-pin DSUB IBM-style port

Audio Support

- Input: 16-bit, monaural or stereo
- Output: 20-bit, monaural or stereo
- Maximum sample rate: 48 kHz
- Input jack: 3.5 mm for microphone or line-in
- Output jack: 3.5 mm for headphone or line-out
- File formats: .au, .snd, .aiff, .wav, .voc
- Protocol: ICA Audio and NFS or TFTP for downloading audio files

Flash Memory Cards

- Field Upgrades: 8MB or 16MB

Standards Compliance

- UL 1950*, CAN/CSA C22.2 No. 950*, IEC 950*, FCC Class A, EN55022 (class A), EN55024, EN60950, C-Tick, VCCI, CE, Energy Star Compliant (* certified by CSA)

Cooling

- Convection (no fan required)

Keyboards Supported

- Windows 95, IBM 3270, SUN type V

Monitor Connector

- Mini D-sub 15-pin, VGA

Server Software

- NC900 series requires NCD NCBridge 4.0
- Available for site and corporate licenses

NCD NCBridge Software Features

Web Support

- Local Netscape NC Navigator Browser; Java Interpreter. Supports HTML, MIME, GIF, JPEG, SMTP, NNTP, FTP, POP3 and IMAP4 (minimum 48MB System Memory recommended)

Boot Options

- Boot from host server
- Boot from local flash memory
- Boot from another NC900's local flash memory ("buddy boot")

Boot Protocols

- TFTP, NFS, DHCP, BOOTP, RARP, Field Upgrade: MOP/DAP

Network Protocols

- Standard: TCP/IP, TFTP, NFS, BOOTP, RARP; DHCP, PPP. Field Upgrades: DECnet and LAT

Protocol Support

- Supports ICA protocol

Network Management

- Standard: Web-based management via local HTTP server, DNS, SNMP MIB II, PING, Boot Monitor; Field Upgrades: DECnet Mirror and DECnet Trigger

Parameter Setup

- Setup menu system, central remote configuration file and Web-based Administrator

Printer Support

- Network printer support, local print screen, local BSD print spooler

X Server

- X Server based on X11 Release 6.1

Server Extensions

- Shape, Input Extensions, Multi-Buffer, Font Caching, Xidle and Xtest RARP Extensions

Local Clients

- Standard: TELNET, Console, Protocol Independent Chooser, Setup, Local Client Launcher, VT220 and VT340 Emulators, Local Xlock, Local Floppy Manager, Low Memory Indicator, XClock, Web-based Administrator includes Local HTTP Server, Audio Player, Audio Mixer, True OSF/Motif v1.1 and v2.0 Window Manager

- Field Upgrades: DECnet (Cterm, LAT), IBM 5250 and 3270E Emulators

Multi-User PC Application Access

- ICA local client for accessing Microsoft Windows 2000 (or Windows NT Server 4.0 with Terminal Server Edition) and Citrix MetaFrame (or WinFrame) 1.6, 1.7 or 1.8

Fonts

- 27 Resident, 700+ available on server tape/CD-ROM

Font Service

- TFTP, NFS, Flash, DAP

Supported Hosts

- SUN, HP, Compaq (Ultrix, VMS, Alpha Open VMS), IBM RS/6000, SGI, Linux and other UNIX Platforms, Windows NT and Windows 2000

Input Options Supported

- Touchscreen, lightpen

Remote Access

- PPP

NCBridge Media Formats

- CD-ROM for Unix and Windows NT environments
- 4MM DAT tape for VAX VMS environments

NCD ThinPATH Plus Support

- Supports redirection of COM port data from Windows NT Terminal Server Edition applications to the NC serial ports

¹ Contact NCD for required NCBridge 4.0 enhancement



Corporate Headquarters

Network Computing Devices, Inc.
301 Ravendale Drive
Mountain View, California 94043
Tel: 650-694-0650
Fax: 650-961-7711
Web: www.ncd.com

For More Information

North America 800-800-9599	Netherlands 31-23-5560670
Australia 61-2-9808-5455	Sweden 46-31-7482430
France 33-1-34-58-21-21	United Kingdom 44-0-845-4583710
Germany 49-0-89-458-728-0	



The Most Reliable Business Network Computer.



- *Need a proven thin client solution that works in a heterogeneous computing environment?*
- *Looking for a state-of-the-art thin client with 24-bit color and 100BaseT to replace your aging X Terminals?*
- *Need a high performance thin client for accessing UNIX, Windows, Web or legacy applications?*
- *Want an X Terminal with the most comprehensive color support available for solving your color flashing problems?*
- *Need a thin client that can be centrally managed from a remote location?*

If the answer is yes, the NC900 Business Network Computer is the right solution.

Designed with the latest state-of-the-art thin client technology, the NC900 delivers the performance and feature set required by users today who need a flexible thin client for accessing UNIX, X11, Windows, Web, Java and legacy applications in a heterogeneous computing environment. Local processing allows selected applications to be run locally; thus off-loading the server processor to perform complex business-related applications rather than simple access processing.

“NCD’s NC900 is the **only terminal** we would think of using in a **mission-critical**

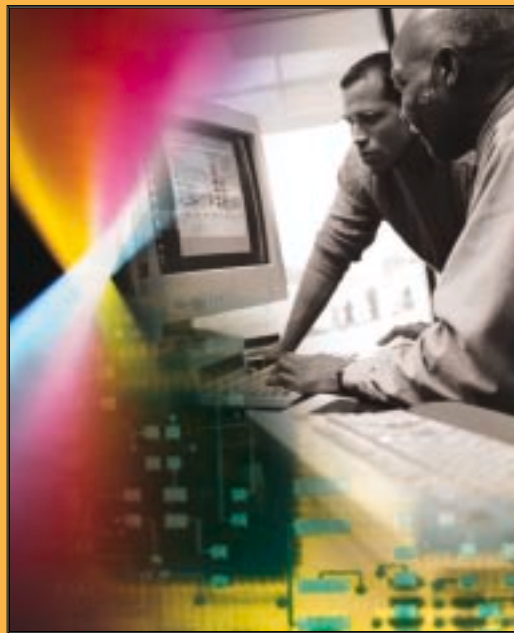
environment.” – Ray Ravida, engineering manager, Daisy Data “Our customer uses

the NCD NC900 to **access** a wide variety of **UNIX**

mainframe and applications. We

point as well

Color feature.



Microsoft-based like the **price**

as the Simultiple

NCD’s products

offer a great **return on investment** and allow for **centralized management**. We really believe

in the product, and our customer really **believes** in the

product.” – Ken McKillop, President, Telassist

An Evolutionary Product with Revolutionary Features.

Why NC900?

Unique to the marketplace, the NC900 Business Network Computer combines the best of evolutionary and revolutionary thin client technologies to deliver a proven computing solution at an outstanding price-to-performance ratio. When combined with NCBridge software, the NC900 offers simultaneous windowed access to a local Netscape Navigator browser, X11 clients, PC applications, Java and legacy applications. Using the local ICA client, the NC900 can access Microsoft Windows 2000 applications running Citrix MetaFrame software.

Proven Solution - The NC900 is powered by NCBridge software, which has evolved over the past ten years into a proven solution. NCBridge includes a broad set of tools for managing and supporting the NC900 in mission-critical application environments that require features such as secondary boot host, secondary xdmcp host, redundant font servers and xdmcp keep alive functionality.

Revolutionary Color Support - The NC900 is the first and only thin client to offer Simultiple Color™, which supports simultaneous multiple color depths. With NCD-proprietary Simultiple Color, the NC900 can display browser images and other X11 applications with accurate 24-bit color fidelity without interfering with 8-bit color applications and annoying color flashing. Simultiple Color allows either a local or host-based browser to be displayed in 24-bit color while 8-bit color applications are simultaneously displayed on the same screen.

Cost Effective - For enterprises of all sizes, the NC900 is a cost-effective network computer solution. Since all applications are loaded on the host server, the NC900 has a much lower cost of administration and a far greater life expectancy than other desktop solutions.

Remote Management - The NC900 is easily configured and managed from a central remote configuration file. And with a local HTTP server, a system administrator can easily interrogate, identify and resolve incorrect NC parameter settings remotely using any Internet browser. Support for SNMP MIB II is also available.

Flexible Solution - Designed to meet the needs of today as well as tomorrow, the NC900 comes standard with 16MB of memory, but can be upgraded to a maximum of 256MB of memory. Also available are optional 8MB or 16MB flash memory cards. Flash memory can be used to allow the NC900 to boot locally as opposed to booting from across the network; thereby off-loading both the network and the boot host. The NC900 also supports “buddy booting” or “peer booting” for network computers located at remote locations. Buddy booting offers a cost effective method for allowing several network computers at a remote location to boot from one NC900 containing a flash memory card.

Reliable - Designed with no fan or hard disk, the NC900 can be depended on for mission-critical applications that demand 100 percent uptime. Using state-of-the-art technology, the NC900 can be configured in a tamper-proof mode so as to prevent novice users from inadvertently disabling the device.

